

Supplier's Product Code :
 Product Added :
 Last Updated by Supplier :
 erudus id :

13444
 31 August 2016
 04 July 2017
 0448799fa55b4ea8b65b1ee08aa08f6c

This specification is published by [Erudus](#) for Turner Price

The information on the [Erudus System](#) has been supplied by the manufacturers of the products and, whilst the owners of the Erudus System take steps to ensure the information is regularly updated, they give no warranty and no guarantee that the information is accurate. Product information and ingredients may change, please always read product labels carefully in addition to using the information provide by Erudus One.

We do not accept liability for any inaccuracies or incorrect information contained on this site. Please visit <http://www.erudus.com/terms-and-conditions> for full terms and conditions.

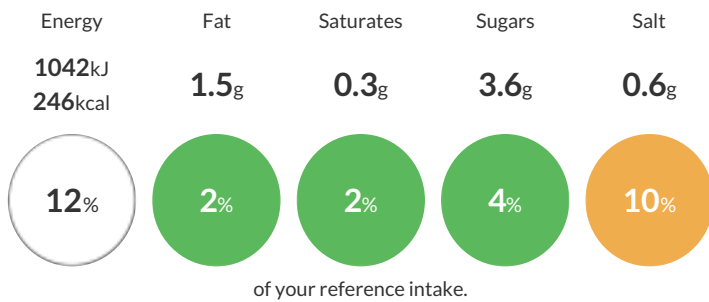
800g 14+2 MWG D Tin (Box 8FR)

Brown bread with malted wheat, barley malt flour, toasted wheat, and buckwheat.

Traded Unit GTIN: [05011579221043](#) Internal GTIN: Supplier: [Frank Roberts & Sons Ltd](#) Suppliers Product Code: [13444](#)

Reference Intake

Each 100g portion contains:



Typical values per 100g : Energy 1042kJ 246kcal

Nutritional Information

Typical Values	Per 100g
Energy	1042kJ 246kCal
Carbohydrates	46.3g
of which sugars	3.6g
Fat	1.5g
of which saturates	0.3g
Fibre	4.7g
Protein	9.5g
Salt	0.6g

Allergy Information

Key: Contains May Contain

 Contains Cereal	 Contains Gluten	 Does Not Contain Milk	 Does Not Contain Eggs	 Does Not Contain Peanuts	 Does Not Contain Nuts	 Does Not Contain Crustaceans	 Does Not Contain Mustard
 Does Not Contain Fish	 Does Not Contain Lupin	 Does Not Contain Sesame	 Does Not Contain Celery	 Contains Soya	 Does Not Contain Molluscs	 Does Not Contain Sulphur Dioxide	

Dietary Information

Key: Suitable for

 Suitable for Vegetarian	 Suitable for Vegan	 May not be suitable for Kosher	 May not be suitable for Halal
---	--	--	---

Ingredients

WHEAT Flour (with added calcium, iron, niacin and thiamine), Water, Malted **WHEAT** Grains (8.4%), Yeast, **BARLEY** Malt Flour, **WHEAT** Gluten, Toasted **WHEAT** (1%), Salt, Dextrose, Sugar, Emulsifiers: E472e, **SOYA** Flour, Preservative: E282, Buckwheat Flour, Rapeseed Oil, Flour Treatment Agent: E300.