

Fresh Meat

FRESH MEAT

Bacon & Gammon	190
Beef	191-192
Chicken	185-186
Lamb	189
Offal & Specialist Meats ..	193-194
Pork	188
Turkey	187

“ Butchered in house to your exact requirements by our specialist butchers ”

(many more cuts available than shown in brochure)

Chicken -

Fresh (Chilled)

Code	Brand	Product Description	Case Size	Unit	Split Available
Whole					
CHI015	-	Chicken Fresh Whole	1	Per Kg	N/A
CHI063	-	Chicken Fronts Chilled	1	Per Kg	N/A
Fillet/Supremes					
CHI057	-	Chicken Fillets (UK) Fresh 6/7oz	2	5kg	N/A
CHI076	-	Chicken Fillets (UK) Fresh 7/8oz	2	5kg	N/A
CHI053	-	Chicken Fillets (Imported) Fresh 7/8oz	1	10kg	N/A
CHI067	-	Chicken Fillets 5x6/7oz	1	Pack	N/A
CHI068	-	Chicken Fillets 5x7/8oz	1	Pack	N/A
CHI069	-	Chicken Fillets 5x9/10oz	1	Pack	N/A
CHI055	-	Chicken Fillets (Imported) Fresh 9oz+	1	Per Kg	N/A
CHI056	-	Chicken Fillets (UK) Fresh 9oz+	1	Per Kg	N/A
CHI061	-	Double Chicken Breast Fillet	1	Per Kg	N/A
CHI070	-	Chicken Supremes 5x6/7oz	1	Pack	N/A
CHI071	-	Chicken Supremes 5x7/8oz	1	Pack	N/A
CHI074	-	Chicken Supremes 5x9/10oz (Skin On)	1	Pack	N/A
Diced					
CHI075	-	Chicken Breast Diced (UK) Chilled	2	5kg	N/A
CHI062	-	Chicken Breast Diced Chilled	1	Per Kg	N/A
CHI060	-	Chicken/Turkey Diced 50/50	1	Per Kg	N/A
Other					
CHI073	-	Chicken Wings 3 Joint Loose Fresh	1	Per Kg	N/A
CHI049	-	Inner Chicken Fillets	1	Per Kg	N/A
CHI066	-	Chicken Legs 1450-1600 Loose Fresh	1	Per Kg	N/A



FRESH MEAT

Chicken - Frozen

Code	Brand	Product Description	Case Size	Unit	Split Available
Whole					
CHK006	-	Chickens O R 1.2kg	1	1.2kg	N/A
CHK008	-	Chickens O R 1.4kg	1	1.4kg	N/A
CHK010	-	Chickens O R 1.6kg	1	1.6kg	N/A
CHK004	-	Chickens O R (Weighted Code) Frozen	1	Per Kg	N/A
CHK020	-	Chickens O R 2.7kg	1	2.7kg	N/A
CHK050	-	Chickens Corn Fed Frozen (Weighted)	1	Per Kg	
CHK100	-	Smoked Chicken Frozen Whole	1	Per Kg	
Fillets/Supremes					
POU006	-	Chicken Breast Fillets	1	10kg	N/A
Other					
CHK073	-	Chicken Wings Frozen	1	Per Kg	N/A
CHK075	-	Chicken Thighs Frozen	1	Per Kg	N/A
CHK060	-	Chicken Leg Portions Frozen	1	Per Kg	N/A
CHK063	-	Chicken Portions Mixed Frozen	1	Per Kg	N/A



FRESH MEAT



Turkey -

Fresh & Frozen

Code	Brand	Product Description	Case Size	Unit	Split Available
Whole					
TUR002	-	Turkey Butterfly (Boneless) Fresh (English)	1	Per Kg	N/A
TUR006	-	Turkey Butterfly (Boneless) Fresh (Imported)	1	Per Kg	N/A
TUR043	-	Turkey Crowns (On The Bone)	1	Per Kg	N/A
Portions / Diced / Minced					
TUR004	-	Turkey Breast Diced Fresh	1	Per Kg	N/A
TUR008	-	Turkey Breast Steaks	1	Per Kg	N/A
TUR010	-	Turkey Breast Strips	1	Per Kg	N/A
TUR028	-	Turkey Royale (66% Breast 33% Thigh)	1	Per Kg	N/A
TUR014	-	Turkey Thigh Meat Diced	1	Per Kg	N/A
TUR016	-	Turkey Meat Minced	1	Per Kg	N/A
TUR012	-	Turkey Thigh Meat Whole (Boneless) Fresh	1	Per Kg	N/A
TUR020	-	Turkey Diced 50:50 (Breast & Thigh)	1	Per Kg	N/A
TUR080	-	Turkey Escalopes 6oz	1	Each	
Turkey - Frozen					
TUF006	-	Turkey Butterfly Frozen (Imported)	1	Per Kg	N/A
TUF022	-	Turkey Dry Frozen	1	Per Kg	N/A



Turkey Butterfly



Turkey

FRESH MEAT



Pork

Fresh & Frozen

Code	Brand	Product Description	Case Size	Unit	Split Available
Whole					
PRC045		Pork Whole Pig For Roasting	1	Per Kg	
PRC046		Suckling Pig Whole	1	Per Kg	
Leg					
PRC006	-	Pork Leg (Boneless/Chilled)	1	Per Kg	N/A
PRC010	-	Pork Leg Strips (Boneless/Chilled)	1	Per Kg	N/A
Loin					
PRC016	-	Pork Loin (Rind On/Boneless)	1	Per Kg	N/A
PRC014	-	Pork Loin (Rindless/Boneless)	1	Per Kg	N/A
PRC012	-	Pork Loin (Bone In/Chilled)	1	Per Kg	N/A
PRC044	-	Pork Loin Middle Cut	1	Per Kg	N/A
PRC022	-	Pork Loin Steaks (Rindless)	1	Per Kg	N/A
Shoulder					
PRC024	-	Pork Shoulder (Bone In)	1	Per Kg	N/A
PRC026	-	Pork Shoulder (Boneless)	1	Per Kg	N/A
Belly					
PRC038	-	Pork Belly Whole (Chilled)	1	Per Kg	N/A
PRC039	-	Pork Belly Rindless 3rib	1	Each	N/A
PRC042	-	Pork Belly Spare Rib Meaty	1	Per Kg	N/A
PRC040	-	Pork Belly Sliced	1	Per Kg	N/A
Diced/minced					
PRC032		Pork Diced Chilled	1	Per Kg	N/A
PRC030		Pork Mince Chilled	1	Per Kg	N/A
Pork - Frozen Leg					
PRF004	-	Pork Leg (Boneless/Frozen)	1	Per Kg	N/A
Loin					
PRF006	-	Pork Loin (Bone In/Frozen)	1	Per Kg	N/A
PRC020	-	Pork Loin Chops Bandsaw (Frozen)	1	Per Kg	N/A
PRF020	-	Pork Loin Ribs (Baby Back/Frozen)	1	Per Kg	N/A
Belly					
PRF016	-	Pork Belly (Frozen)	1	Per Kg	N/A
PRF018	-	Pork Belly Meaty Ribs (Frozen)	1	Per Kg	N/A
Other					
PRF012	-	Pork Tenderloin Fillet (Frozen)	1	Per Kg	N/A



Pork Chop



Pork Tenderloin Fillet

Lamb -

Frozen/thawed New Zealand

Code	Brand	Product Description	Case Size	Unit	Split Available
Leg					
NZL008	-	Imp Lamb Leg (Boneless) Thawed	1	Per Kg	N/A
NZL009	-	Imp Lamb Leg (Boneless) Frozen	1	Per Kg	N/A
NZL006	-	Nz/Aus Mutton Leg (Boneless) Frozen	1	Per Kg	N/A
NZL022	-	Nz/Aus Lamb Leg (Bone In)	1	Per Kg	N/A
NZL010	-	Nz/Aus Lamb Leg Steak (Boneless)	1	Per Kg	N/A
Racks and Shanks					
NZL005	-	Lamb Racks Frozen	1	Per Kg	N/A
NZL053	-	Lamb Rack 7 Rib French Trim	1	Per Kg	N/A
NZL024	-	Nz/Aus Lamb Shanks	1	Per Kg	N/A
Loin					
NZL050	-	Nz/Aus Lamb Loin 1 Rib (Bone In)	1	Per Kg	N/A
NZL054	-	Lamb Loin French Trim 4 Rib	1	Per Kg	N/A
Shoulder					
NZL032	-	Nz/Aus Lamb Shoulder (Boneless)	1	Per Kg	N/A
NZL030	-	Nz Lamb Henry's (Shoulder Joints)	1	Per Kg	N/A
Chops and Other					
NZL056	-	Nz/Aus Lamb Chops Frozen Bandsaw	1	Per Kg	N/A
NZL058	-	Nz/Aus Lamb Chops Barnsley Frz	1	Per Kg	N/A
NZL001	-	Nz/Aus Lamb Rumps (Boneless) Frozen	1	Per Kg	N/A
NZL060	-	Nz/Aus Lamb Noisettes Thawed	1	Per Kg	N/A
Diced and Minced					
NZL040	-	Nz/Aus Lamb Diced Frozen/thawed	1	Per Kg	N/A
NZL042	-	Nz/Aus Lamb Minced Frozen/thawed	1	Per Kg	N/A



Lamb Chops



Lamb Leg

FRESH MEAT



Lamb

Bacon & Gammon

Code	Brand	Product Description	Case Size	Unit	Split Available
Bacon From Our Butchers					
BAC160	-	Bacon Back Chops (Rindless)	1	Per Kg	N/A
BAC156	-	Bacon Back Whole (Rindless) 705	1	Per Kg	N/A

Chilled Bacon (Pre Packed) available on page 154

Code	Brand	Product Description	Case Size	Unit	Split Available
Gammon Horseshoe					
BAC130	-	Gammon Horseshoe (Whole)	1	Per Kg	N/A
BAC207	-	Horseshoe Gammon Steaks 5x4oz/113g	1	Pack	N/A
BAC208	-	Horseshoe Gammon Steaks 5x8oz/226g	1	Pack	N/A
BAC209	-	Horseshoe Gammon Steaks 5x12oz/340g	1	Pack	N/A
BAC210	-	Horseshoe Gammon Steaks 5x10oz/283g	1	Pack	N/A
BAC132	-	Gammon Horseshoe Steaks (Whole Slice)	1	Per Kg	N/A
BAC133	-	Gammon Horseshoe Steaks (Cut In Half)	1	Per Kg	N/A
BAC100	-	Gammon Horseshoe Smoked (Boneless)	1	Per Kg	N/A
Gammon					
BAC102	-	Gammon Whole Rind On (Boneless)	1	Per Kg	N/A
BAC106	-	Gammon Joints Rind On (Boneless)	1	Per Kg	N/A
BAC134	-	Gammon Corner Joints Netted (Rind On)	1	Per Kg	N/A
BAC112	-	Gammon Steaks (Half Slice)	1	Per Kg	N/A
BAC172	-	Gammon Trims	1	Per Kg	N/A



Bacon



Gammon

FRESH MEAT

Beef

Fresh (Chilled)

Code	Brand	Product Description	Case Size	Unit	Split Available
Selected Cuts					
BEE040	-	Beef Fore Rib Carvery Cut	1	Per Kg	N/A
BEE042	-	Beef Fore Rib (Boneless)	1	Per Kg	N/A
BEE038	-	Beef Fore Rib (Bone In)	1	Per Kg	N/A
BEE010	-	Beef Topside (Whole/Boneless)	1	Per Kg	N/A
BEE012	-	Beef Topside Joint (Boneless)	1	Per Kg	N/A
BEE028	-	Beef Sirloin (Bone In)	1	Per Kg	N/A
BEE014	-	Beef Silverside (Whole/Boneless)	1	Per Kg	N/A
BEE016	-	Beef Silverside Joint (Boneless)	1	Per Kg	N/A
BEE004	-	Beef Knuckle (Top Rump)	1	Per Kg	N/A
BEE050	-	Beef Brisket (Boneless)	1	Per Kg	N/A
BEE015	-	LMC Beef Joint	1	Per Kg	N/A
Imported Cuts					
BEE110	-	Imported Topside (Whole)	1	Per Kg	N/A
BEE114	-	Imported Silversides (Whole)	1	Per Kg	N/A
Fillet					
BEE032	-	Beef Fillets UK (Whole)	1	Per Kg	N/A
BEP050	-	Fillet Steaks UK (Weighted)	1	Per Kg	N/A
BEE005	-	Beef Fillet Import (Whole/Lard Trim)	1	Per Kg	N/A
BEE006	-	Beef Fillet Steak Import (Weighted)	1	Per Kg	N/A
BEE033	-	Fillets Tails	1	Per Kg	N/A
BEE034	-	Beef Fillets Whole (Uk/Chainoff)	1	Per Kg	
Striploin					
BEE030	-	Beef Striploin UK (S/trim Whole)	1	Per Kg	N/A
BEE031	-	Beef Striploin Scottish (Whole)	1	Per Kg	N/A
BEE500	-	Striploin Imported (Whole)	1	Per Kg	N/A
BEP019	-	Sirloin Steaks UK (Weighted)	1	Per Kg	N/A
BEP051	-	Sirloin Steak UK 5x4oz/113g	1	Pack	N/A
BEP052	-	Sirloin Steak UK 5x8oz/226g	1	Pack	N/A
BEP057	-	Sirloin Steak UK 5x10oz	1	Pack	N/A
BEP053	-	Sirloin Steak UK 5x12oz/340g	1	Pack	N/A



Beef Joint



Beef Fillet Steak

FRESH MEAT

Beef

Fresh (Chilled)

Code	Brand	Product Description	Case Size	Unit	Split Available
Rump					
BEE022	-	Beef Rump UK (Whole/Boneless)	1	Per Kg	N/A
BEP001	-	Rump Steaks UK (Weighted)	1	Per Kg	N/A
BEE501	-	Rump Imported (Whole/D Shaped Chill)	1	Per Kg	N/A
BEE502	-	Rump Steak Imported (Weighted)	1	Per Kg	N/A
BEP054	-	Rump Steaks UK 5x4oz/	1	Pack	N/A
BEP055	-	Rump Steaks UK 5x8oz/226g	1	Pack	N/A
BEP058	-	Rump Steaks UK 5x10oz/	1	Pack	N/A
BEP056	-	Rump Steaks UK 5x12oz/340g	1	Pack	N/A
Ribeye					
BEE024	-	Beef Sirloin Short Loin (Frozen)	1	Per Kg	N/A
BEE044	-	Beef Rib Eye Roll (Boneless)	1	Per Kg	N/A
BEE084	-	Imported Rib Eye Roll (Chilled)	1	Per Kg	N/A
BEE048	-	Beef Rib Eye Steaks 8oz	1	Each	N/A
BEE049	-	Beef Rib Eye Steaks 10oz	1	Each	N/A
Diced/Minced and Other					
BEE011	-	Beef Skirt (Diced)	1	Per Kg	N/A
BEE018	-	Beef Strips (Topside)	1	Per Kg	N/A
BEE074	-	Beef Trims 95vl	1	Per Kg	N/A
BEE054	-	Beef Silverside Braising Steak	1	Per Kg	N/A
BEE056	-	Beef Chuck Braising Steak	1	Per Kg	N/A
BEE062	-	Beef Chuck Roll	1	Per Kg	N/A
BEE068	-	Beef Chuck Steak & Kidney	1	Per Kg	N/A
BEE072	-	Beef Mince 1st Quality	1	Per Kg	N/A
BEE064	-	Beef Mince 1st Quality (Frozen)	1	Per Kg	N/A
BEE060	-	Beef No1 (Diced)	1	Per Kg	N/A
BEE070	-	Beef Mince Steak	1	Per Kg	N/A



Rump Steak



Rib Eye



BEE070 Beef Mince Steak

FRESH MEAT

Offal and Specialist Meats

Code	Brand	Product Description	Case Size	Unit	Split Available
Offal					
OFF028	-	Calf Livers (Frozen)	1	Per Kg	N/A
OFF026	-	Chicken Livers (Frozen)	1	Per Kg	N/A
OFF022	-	Lamb Kidney (Frozen)	1	Per Kg	N/A
OFF020	-	Lamb Liver (Frozen)	1	Per Kg	N/A
OFC022	-	Lamb Liver Sliced	1	Per Kg	N/A
OFF002	-	Ox Liver (Frozen)	1	Per Kg	N/A
OFF006	-	Ox Tail (Frozen)	1	Per Kg	N/A
OFC018	-	Pig Kidney Diced	1	Per Kg	N/A
OFF016	-	Pig Kidney (Frozen)	1	Per Kg	N/A
OFF012	-	Pig Liver (Frozen)	1	Per Kg	N/A
OFC016	-	Pig Liver Sliced	1	Per Kg	N/A
Game					
MSP010	-	Diced Rabbit (Frozen)	1	Per Kg	N/A
GAM018	-	Game Mix (Boneless)	1	Per Kg	N/A
GAM016	-	Guinea Fowl Supremes (Frozen)	1	Per Kg	N/A
GAM014	-	Guinea Fowl Whole (Frozen)	1	Per Kg	N/A
GAM009	-	Free Range Whole Partridge	1	Each	N/A
GAM010	-	Partridge	1	Each	N/A
GAM006	-	Pheasants Whole English (Game Shot)	1	Each	N/A
GAM013	-	Whole Pigeon	1	SGL	N/A
Duck/Geese					
DUC021	-	Free Range Whole Duck	1	Per Kg	N/A
DUC024	-	Duck Breast Fillet 200-250g	1	Per Kg	N/A
DUC025	-	Duck Breast Fillet 280-360g	1	Per Kg	N/A
DUC022	-	Duck Oyster Leg Bulk	1	Per Kg	N/A
DUC002	-	Ducks O R 1.9kg	1	Each	N/A
DUC006	-	Ducks O R 2.4kg	1	Each	N/A
DUC010	-	Ducks O R 2.8kg	1	Each	N/A
DUC027	-	Smoked Duck Breast Frozen 200/220g	1	Each	N



Liver



Duck

FRESH MEAT

In some cases, sufficient notice is required to order these products. Please ask telesales for more details.

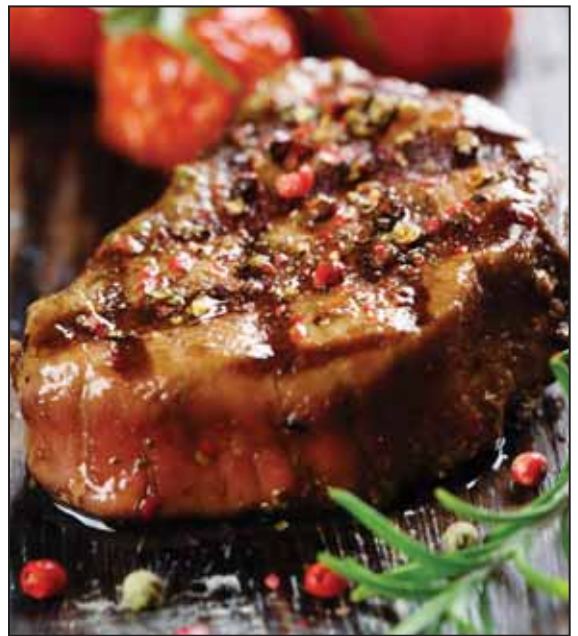
Offal and Specialist Meats

Code	Brand	Product Description	Case Size	Unit	Split Available
More Exotic					
MSP018	-	Crocodile Fillets (Boneless)	1	Per Kg	N/A
MSP017	-	Kangaroo Fillets	1	Per Kg	N/A
MSP016	-	Kangaroo Rump Steaks	1	Per Kg	N/A
MSP014	-	Ostrich Steaks	1	Per Kg	N/A
MSP012	-	Wild Boar Steaks 8oz 225g	2	Each	N/A
GAM042	-	Veal Silverside	1	Per Kg	N/A
GAM036	-	Venison Diced	1	Per Kg	N/A
GAM032	-	Venison Haunch (Bone In)	1	Per Kg	N/A
GAM030	-	Venison Haunch (Boneless)	1	Per Kg	N/A
GAM038	-	Venison Steaks 2 x 200g	1	Pack	N/A



FRESH MEAT





FRESH MEAT